



custom

laboratory reactor  
system

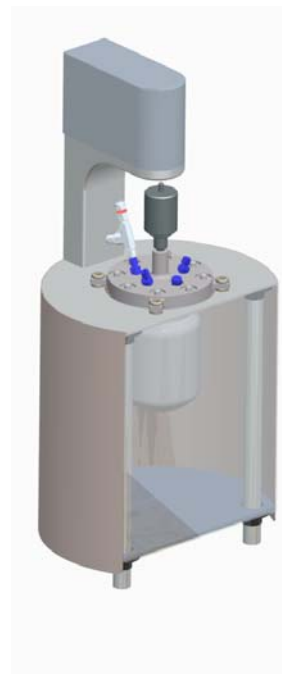
pressure

steel, hastelloy, titanium,  
up to 300 bar

## High Pressure Oil Jacketed Reaction Systems

### Range Overview

- Vessel range 100ml up to 10L
- Fitted with zero dead volume rising stem bottom outlet valve.
- Flange clamp allows easy and safe removal of vessel.
- Floor or bench mounted support frame depending on vessel size.
- Magnetic Stirrer Drive for isolated stirring.
- Optional levels of device management and automation using Atlas PC software, Reactor Master or a combination of both.
- Completely customisable to meet most requirements



### Specification highlights

<b>Vessel Volume</b>	100ml to 10 Litre
<b>Temperature Range.</b>	-40°C to 250°C.
<b>Pressure Range.</b>	Vacuum to 60 bar
<b>Materials</b>	Stainless Steel, Hastelloy, Titanium
<b>Heating/Cooling.</b>	Circulator
<b>Lid Design</b>	Wide range of port options to suite your application.
<b>Agitation</b>	Overhead Stirring: 50 to 1000 RPM (optional torque measurement)
<b>Agitator Types</b>	Anchor, Retreat Curve, 4 Blade Impellor, Gas Exchange, Custom Design.

### Upgrade options

<b>Automation / Logging</b>	Via Atlas PC software and/or Syrris Reactor Master series
<b>Liquid Feed</b>	Volumetric dosing, Gravimetric Dosing
<b>Gas Feed</b>	Pressure control, Gas dosing, Gas uptake monitoring, ...
<b>Other</b>	Condensers, Distillation Assemblies, Re-circulation, IR, pH Measurement and Control, Turbidity, Conductivity, Calorimetry, ...

*For further information on upgrade options please consult separate datasheets*

# High Pressure Electrically Heated Reaction Systems

## Range Overview

- Completely customisable to meet any requirements
- Standard Control via Atlas Base.
- System Volume Range 10ml through to 1 Litre.
- Optional levels of device management and automation using the Atlas Base software or in combination with the Reactor Master.
- Vessel flange clamp allows easy and safe removal of vessel.
- Magnetic Stirrer Drive.
- Bench mounted support frame.

## Specification highlights

<b>Vessel Volume</b>	25ml to 1 Litre
<b>Temperature Range.</b>	-20°C to 275°C
<b>Pressure Range.</b>	Vacuum to 200 bar (1 litre MAWP 130bar)
<b>Materials</b>	Stainless Steel, Hastelloy, Titanium
<b>Heating</b>	Electric Mantle
<b>Cooling System</b>	Internal Cooling Coil
<b>Lid Design</b>	Wide range of port options to suite your application
<b>Agitation</b>	Overhead Stirring: 50 to 800 RPM (optional torque measurement)
<b>Agitator Types</b>	Anchor, Retreat Curve, 4 Blade Impellor, Gas Exchange, Custom Design
<b>Control</b>	Atlas Base

## Upgrade options

<b>Automation / Logging</b>	Via Atlas PC software and/or Syrris Reactor Master series
<b>Liquid Feed</b>	Volumetric dosing, Gravimetric Dosing
<b>Gas Feed</b>	Pressure control, Gas dosing, Gas uptake monitoring, ...
<b>Other</b>	Condensers, Distillation Assemblies, Re-circulation, IR, pH Measurement and Control, Turbidity, Conductivity, Calorimetry, ...

*For further information on upgrade options please consult separate datasheets*



**Syrris Ltd.**  
27 Jarman Way, Royston, Hertfordshire  
SG8 5HW, United Kingdom

T: +44 (0)1763 242555  
F: +44 (0)1763 242992  
E: [info@syrris.com](mailto:info@syrris.com)  
W: [www.syrris.com](http://www.syrris.com)

**Syrris Inc. (North America)**  
29 Albion Place  
Charlestown, MA 02129

T: 617 848 2997  
F: 617 532 1033  
E: [info-usa@syrris.com](mailto:info-usa@syrris.com)  
W: [www.syrris.com](http://www.syrris.com)