



custom
laboratory reactor
system

glass
up to 12 bar, up to 50L

Atmospheric Glass Reaction Systems

Range Overview

- Vessel volumes from 5L to 50L
- Single, double or triple jacketed
- Temperature compensated zero dead volume rising stem bottom outlet valve in chemically resistant PTFE
- Many lid and porting options
- Vessel clamp allows easy and safe removal of vessel
- Floor-standing support frame fitted with lockable-braked wheels to aid installation
- Oil Pipes supplied with quick fit oil connectors and shut-off / drain valves
- Optional levels of device management, automation and logging
- Many options for future upgrades to enhance functionality
- Completely customisable to meet any requirements



Specification highlights

Vessel Volume	5L to 50L
Temperature Range	-40°C to 200°C
Temperature Measurement	Reactor Contents, Jacket Inlet Temperature, ...
Pressure Range	Vacuum to +0.5 barg
Heating/Cooling	Jacket utilising re-circulator (optional vacuum jacket)
Agitation	Overhead stirring: 50 – 600 RPM (optional torque measurement)
Agitator Materials	Glass, PTFE, Stainless, ...
Agitator Types	Anchor, Retreat Curve, 4 Blade Impellor, ...

Upgrade options

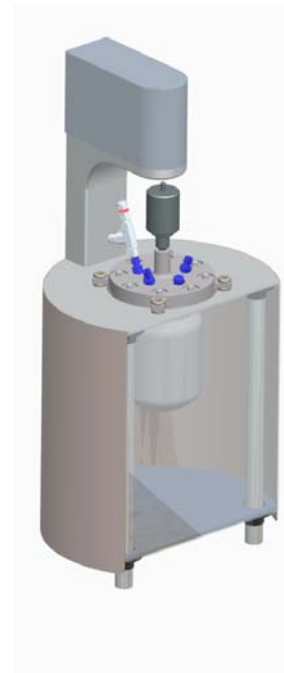
Automation / Logging	Via PC software and/or Syrris Reactor Master series
Liquid Feed	Volumetric dosing, Gravimetric Dosing
Gas / Pressure	Low Pressure Purge, Gas Sparge, Gas evolution, ...
Other	Condensers, Distillation Assemblies, Re-circulation, IR, pH Measurement and Control, Turbidity, Conductivity, Calorimetry, ...

For further information on upgrade options please consult separate datasheets

Pressurised Glass Reaction Systems

Range Overview

- Vessel volumes from 100ml to 1.6L, fully certified
- Single, double or triple jacketed
- Zero dead volume rising stem bottom outlet valve in chemically resistant PTFE
- Vessel clamp allows easy and safe removal of vessel
- Bench-standing support frame with fixed head plate
- Oil Pipes supplied with quick fit oil connectors
- Optional levels of device management, automation and logging
- Many options for future upgrades to enhance functionality
- Completely customisable to meet any requirements



Specification highlights

Vessel Volume	100ml to 1.6L
Temperature Range	-40°C to 200°C
Temperature Measurement	Reactor Contents, Jacket Inlet Temperature, ...
Pressure Range	Vacuum to +12.0 barg
Heating/Cooling	Jacket utilising re-circulator (optional vacuum jacket)
Agitation	Overhead stirring: 50 to 1000 RPM (optional torque measurement)
Agitator Materials	Glass, Stainless, ...
Agitator Types	Anchor, Retreat Curve, 4 Blade Impellor, ...

Upgrade options

Automation / Logging	Via PC software and/or Syrris Reactor Master series
Liquid Feed	Volumetric dosing, Gravimetric Dosing
Gas Feed	Pressure control, Gas dosing, Gas uptake monitoring, ...
Other	Condensers, Distillation Assemblies, Re-circulation, IR, pH Measurement and Control, Turbidity, Conductivity, Calorimetry, ...

For further information on upgrade options please consult separate datasheets



Syrris Ltd.
27 Jarman Way, Royston, Hertfordshire
SG8 5HW, United Kingdom

T: +44 (0)1763 242555
F: +44 (0)1763 242992
E: info@syrris.com
W: www.syrris.com

Syrris Inc. (North America)
29 Albion Place
Charlestown, MA 02129

T: 617 848 2997
F: 617 532 1033
E: info-usa@syrris.com
W: www.syrris.com