



custom  
laboratory reactor  
system

gas

pressure monitoring  
and gas feed

## Pressure Monitoring and Gas Feed

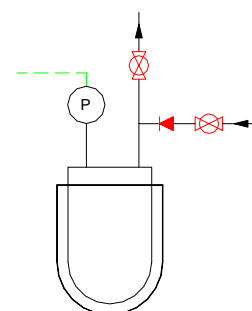
### Range Overview

- all pressure systems come with pressure dial gauge and burst disc
- numerous options for upgrades to pressure monitoring and gas feed depending on level of sophistication required, e.g.:
  - pressure monitoring
  - pressure control
  - gas dosing control
  - multiple gas feeds
  - gas evolution monitoring
- optional levels of device management, automation and logging using Reactor Master and/or PC software
- options for future upgrades to enhance functionality
- customisable to meet most requirements
- tailored to each system to ensure seamless integration



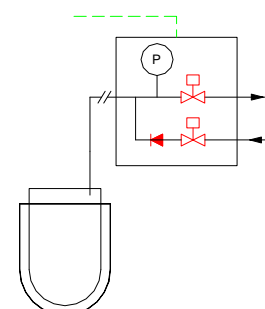
### Pressure Monitoring

- monitor pressure in reactor via pressure transducer, logged by software
- vacuum to ~200bar
- control via manually operated inlet and vent valve
- manually set flow restrictors determine gas flow rates
- protected via in-line check valve from back-feed



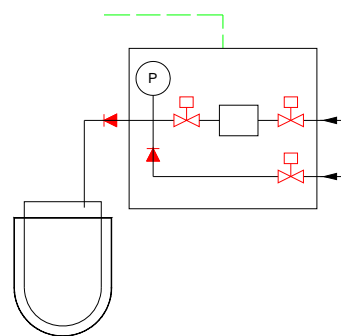
### Pressure Control

- monitor pressure in reactor via pressure transducer, logged by software
- vacuum to ~200bar
- automatically maintains pressure setpoint in reactor using solenoid driven inlet and outlet valves
- manually set flow restrictors determine gas flow rates
- protected via in-line check valve from back-feed



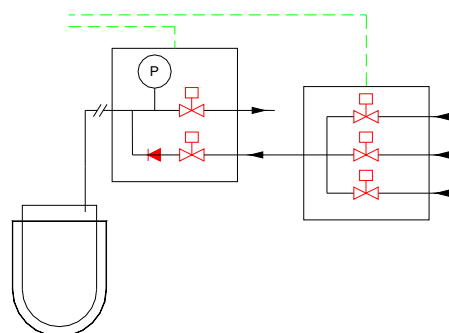
## Gas Dosing Control

- introduce known quantities of gas into reactor under automatic control
- maintain reactor pressure whilst monitoring gas introduction rate
- ideal for use where consumption of gas needs to be monitored



## Multiple Gas Feeds

- upgrade for pressure control or gas dosing control
- allows selection of up to 3 input gases under computer control
- ideal for use with separate purge / inerting / reaction gases



## Gas Evolution Monitoring

- range of meters available for mass flow or volumetric flow measurement
- calibrations available for wide range of gases
- pressure Range vacuum to ~200bar
- data logged by PC software for later analysis



**Syrris Ltd.**  
27 Jarman Way, Royston, Hertfordshire  
SG8 5HW, United Kingdom

**T:** +44 (0)1763 242555  
**F:** +44 (0)1763 242992  
**E:** [info@syrris.com](mailto:info@syrris.com)  
**W:** [www.syrris.com](http://www.syrris.com)

**Syrris Inc. (North America)**  
29 Albion Place  
Charlestown, MA 02129

**T:** 617 848 2997  
**F:** 617 532 1033  
**E:** [info-usa@syrris.com](mailto:info-usa@syrris.com)  
**W:** [www.syrris.com](http://www.syrris.com)